

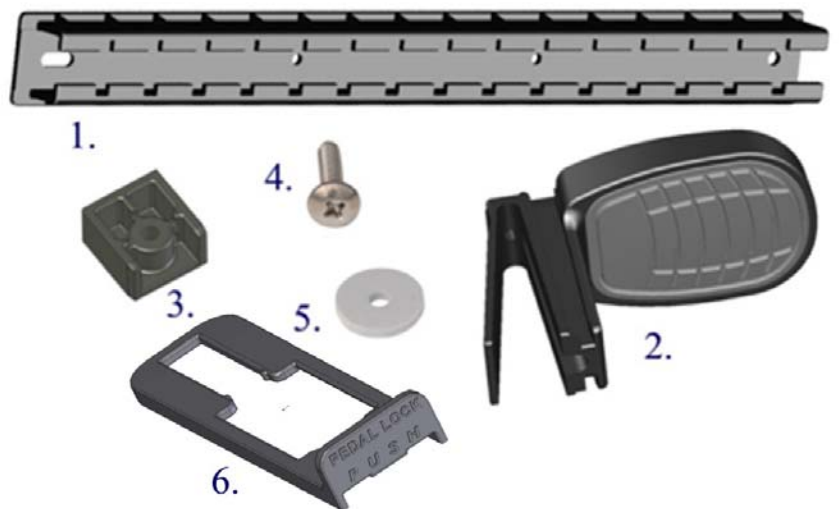
Instructions for assembling the KS-footrest



KS-footrest (code: 713210)

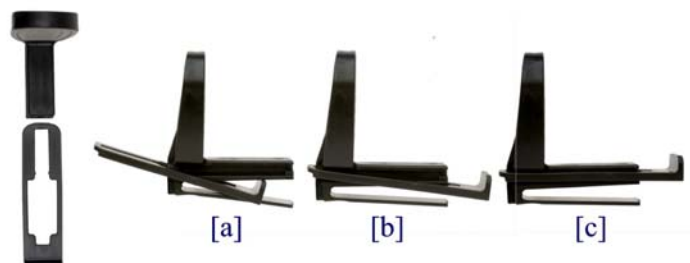
KS-footrest parts:

- | | |
|-------------------------------|----------|
| (1) Rail [code:713252] | (2 pcs.) |
| (2) Pedal [code:713251] | (2 pcs.) |
| (3) Rail end [code:713253] | (4 pcs.) |
| (4) Screw [code:713254] | (4 pcs.) |
| (5) Foam washer [code:713255] | (4 pcs.) |
| (6) Pedal Lock [code:713254] | (2 pcs.) |



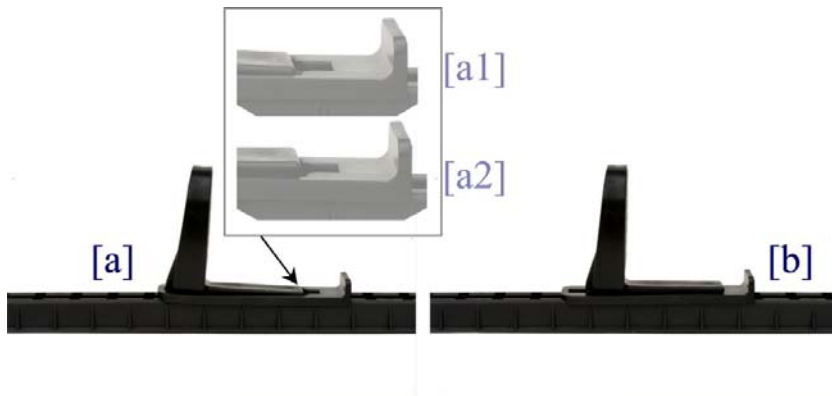
Assembling the pedal lock (part number 6) to the pedal (part number 2):

- slide the hinge mechanism plate of the pedal inside the pedal lock part. Push it further, so that the pedal lock can turn over the pedal hinge mechanism (like in picture [a])
- Pull the pedal lock backwards so that the front end of the pedal lock will stay on the track in the pedal. Pull it backwards until the end of the inside hole in pedal lock faces the pedal front edge (like in picture [b])
- Then move the back of the pedal lock within same level with the front end and push it in the same track where the front end already is. (like in picture [c])



Pedal lock use and function:

- (a) Pedal lock is in “open” position you are able to move pedal adapter part and adjust the distance of the footrest. (like in picture [a1] & [a2])
- (b) Pedal lock is in “locked” position. While pedal lock is closed you are not able to adjust the footrest which gives more security on paddling.



Assembling the footrest:

- (a) Slide the pedal onto the rail. Consider the end with oval shaped hole as the front end.
- (b) Place the foam washers on the fastening holes at the both ends of the rail.
- (c) Slide the rail end parts onto the both ends of the rail.
- (d) Fasten the rail itself by screwing it through the kayak hull from the outside. Screws don't attach the rail itself, but they fasten the rail end parts which will tighten the whole system properly against the kayak hull.

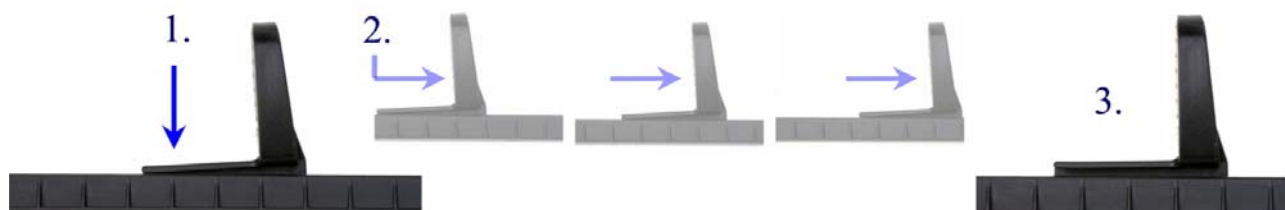


Using & adjusting the pedals

KS-footrest is extremely easy to use and adjust. You can adjust the distance of the pedals simply by feet and you don't have to use your hands at all. You can do this while paddling or on the shore without opening the spraydeck. You don't have to try reaching the mechanism with your hands which makes the paddling easier and more secure.

Moving the pedals forward:

- 1. Press the adapter part of the pedal outwards with the side of your foot.
- 2. Push the pedal itself forward with the ball of the foot holding the adapter pressed.
- 3. Lock the pedal to the distance you desire. It is locked automatically when the foot is taken off.



Bringing the pedals backwards:

1. Place your foot behind the pedal.
2. Pull the pedal backwards as much as needed. The pedal is unlocked while pulling.
3. The pedal is locked automatically when the foot is taken off.

